

HORMAN HYDE FOOTREST KIT

NORTON COMMANDO (NOT Mk.III)

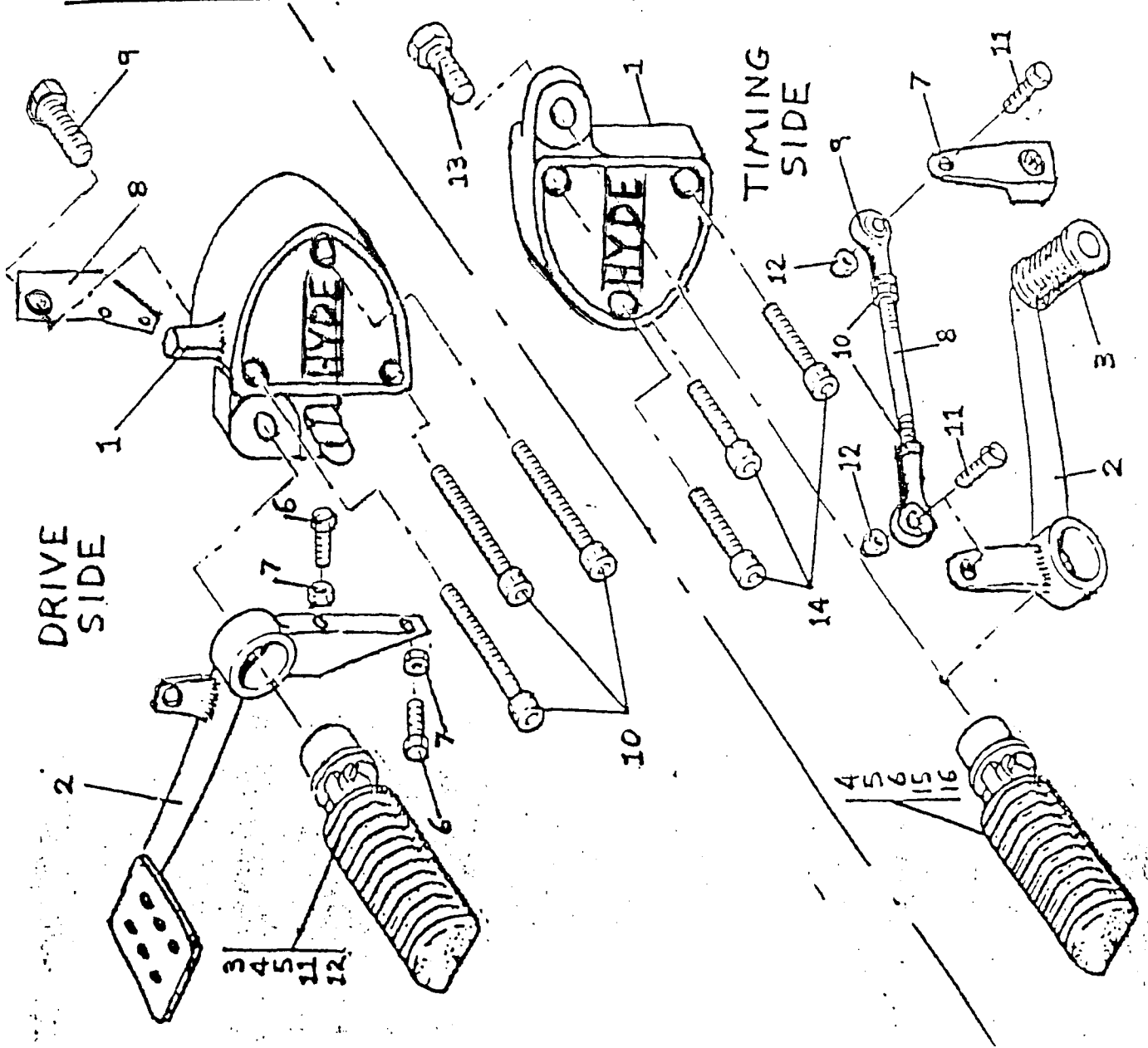
1. Check all parts against list.
2. Assemble as diagrams with grease at gear and brake pedal pivots.
3. Adjust gear linkage rod to affect pedal height.

DRIVE SIDE

- | | | | |
|-----|--------------------------------|---------|------|
| 1. | Mounting Block | Pt. No. | 2008 |
| 2. | Brake Pedal | off | 2011 |
| 3. | Footrest Boss | 1 | 1105 |
| 4. | " Rubber | 1 | 1107 |
| 5. | " Blade | 1 | 1106 |
| 6. | Screw 2 B.A. x 3/8" | 2 | 1115 |
| 7. | 1/2 Nut 2 B.A. | 2 | 2012 |
| 8. | Stoplight Bracket | 1 | 2013 |
| 9. | Bolt 3/8" UNF x 7/8" | 1 | 1118 |
| 10. | Allen Screw 5/16" UNC x 2 1/4" | 3 | 2014 |
| 11. | Bolt 5/16" x 1" | 1 | 1119 |
| 12. | Nut 5/16" Locking | 1 | 1120 |

TIMING SIDE

- | | | | |
|-----|--------------------------------|---------|------|
| 1. | Mounting Block | Pt. No. | 2007 |
| 2. | Gear Pedal | off | 2015 |
| 3. | " Rubber | 1 | 1124 |
| 4. | Footrest Boss | 1 | 1105 |
| 5. | " Rubber | 1 | 1107 |
| 6. | " Blade | 1 | 1106 |
| 7. | Operating Lever | 1 | 2009 |
| 8. | Rod 5 1/2" O/A | 1 | 1143 |
| 9. | Rose Joint | 2 | 1125 |
| 10. | 1/2 Nut 1/2" UNF | 2 | 1126 |
| 11. | Bolt 1/4" UNF x 7/8" | 2 | 1128 |
| 12. | Locking Nuts 1/4" UNF | 2 | 1130 |
| 13. | Bolt 3/8" UNF x 7/8" | 2 | 1118 |
| 14. | Allen Screw 5/16" UNC x 1 1/4" | 3 | 2010 |
| 15. | Bolt 5/16" x 1" | 1 | 1119 |
| 16. | Nut 5/16" Locking | 1 | 1120 |



BRITCYCLE.COM
BRITCYCLE.COM
BRITCYCLE.COM

